



ALLOY FLANGES & FITTINGS

BRODER METALS GROUP

Your source for stainless steel, nickel alloy and titanium flanges, special forgings and fittings

Global reach, personal touch

We are here to solve your problems – special requirements outside of the above product / size ranges will always be considered.

All products covered by our Group ISO 9001:2008 TUV accreditation.

We have In-house Ultrasonic (level 2 PSN) and full QA specification and process control.

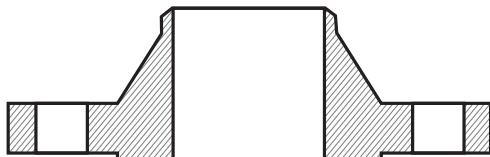
We're here to help you.

Tel: +44 (0) 114 242 3040

Fax: +44 (0) 114 261 1519

FORGINGS AND FLANGES PRODUCT RANGE

WELD NECK



Standard	Size	Rating
ASME B16.5	0.5" – 24" 0.5" – 24"	150 – 2500
ASME B16.47 SERIES A (MSS S44)	Up to 60" Up to 47"	150 – 300 600 – 900
ASME B16.47 SERIES B (API 605)	Up to 60"	75 – 300
BS 3293	Up to 60" Up to 48"	15 – 300 600 – 900
BS10/AWWA	Up to 60"	Class B, D, E, F, G, & H
BS 45.04 / BS EN1092	Up to 60"	PN2.5 – 250
AP16a / 6BX	Up to 24"	3 – 20000 psi

SLIP-ON



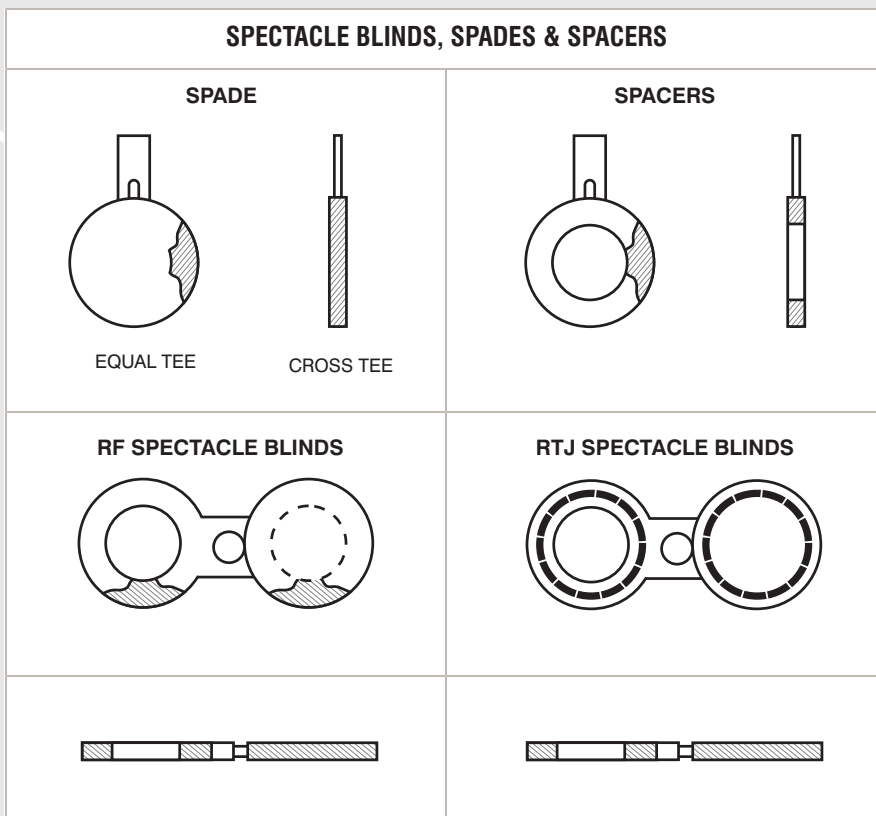
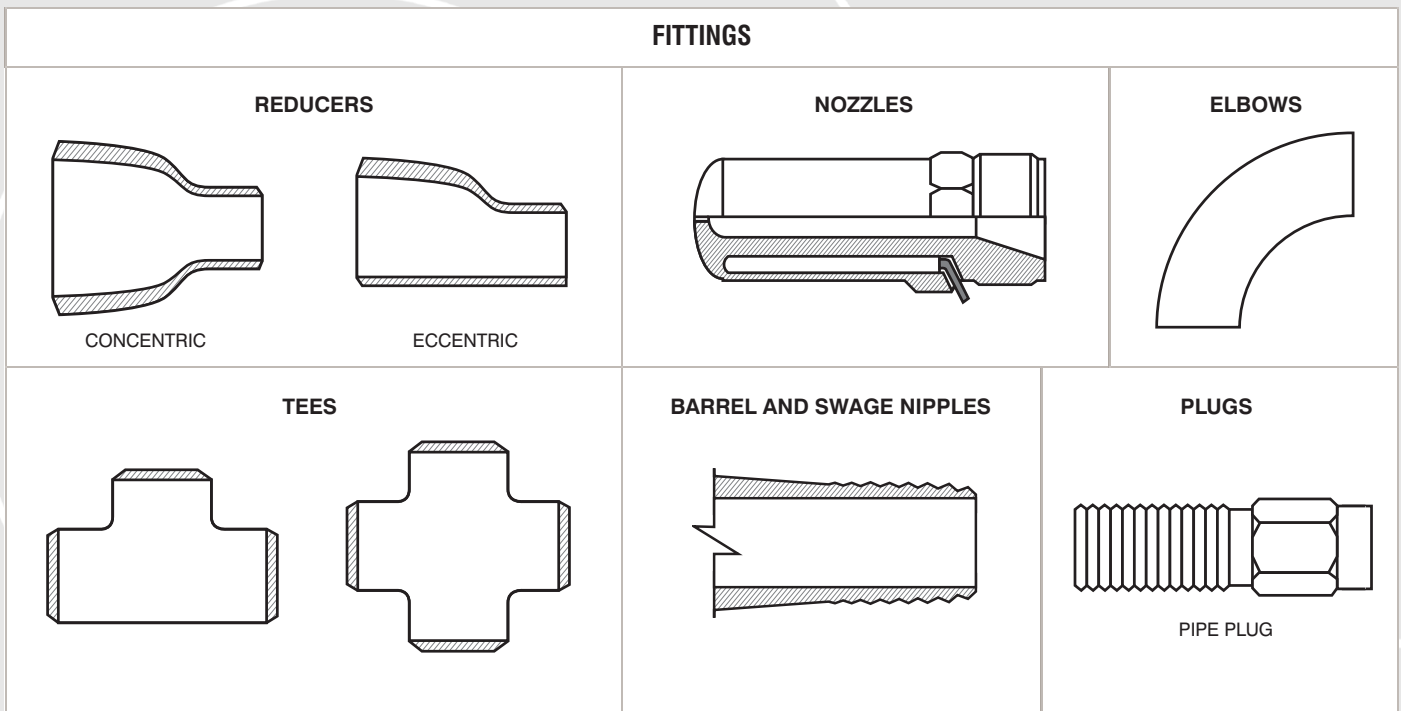
Standard	Size	Rating
ASME B16.5	0.5" – 24"	150 – 2500
BS 3293	Up to 60" Up to 48"	15 – 300 600 – 900
BS 45.04 / BS EN1092)	Up to 60"	PN2.5 – 250

BLIND



Standard	Size	Rating
ASME B16.5	0.5" – 24"	150 – 2500
ASME B16.47 SERIES A (MSS S44)	Up to 60" Up to 47"	150 – 300 600 – 900
ASME B16.47 SERIES B (API 605)	Up to 60"	75 – 300
BS 3293	Up to 60" Up to 48"	15 – 300 600 – 900
BS10/AWWA	Up to 60"	Class B, D, E, F, G, & H
BS 45.04 / BS EN1092	Up to 60"	PN2.5 – 250
AP16a / 6BX	Up to 24"	3 – 20000 psi

SHEET/ PLATE, PIPE FITTINGS, SPECTACLE BLINDS, SPADES & SPACERS



SHEET/ PLATE
Standard sizes & in Strip & Coil

PIPE

Seamless & Welded	1/4" – 24"	Sch 10 – 160
-------------------	------------	--------------

OTHER PRODUCTS

Rings, Sockets, Lap-Joints, Pipe Flanges, Swivel Ring Flanges, Seamless Piped Flanges, Anchor Flanges, Socket Weld Flanges, Impellor Rings, Forged Discs, Caps and Dished Ends, Bulkheads, Manifold Blocks, and Customised Forgings.

Up to 24"
Profile, plasma and water jet cut
To: API 590; ASME B16.48 150 – 2500 Rating

Tel: +44 (0) 114 242 3040